



Pennine Lancashire LEGI
Programme
Eureka Strand



* 3 National outcomes of LEGI

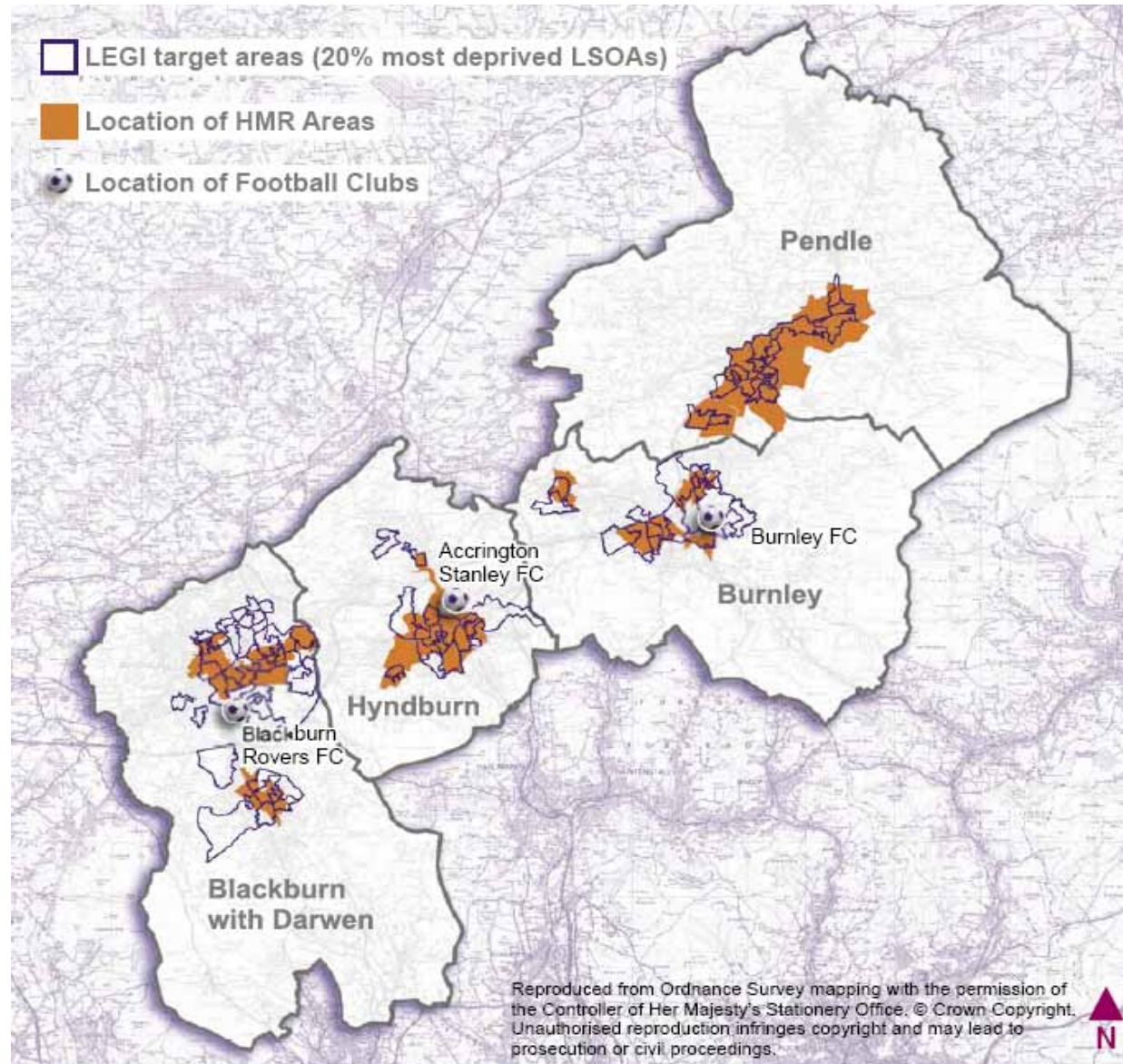
- to increase total entrepreneurial activity among the population in deprived local areas;
- to support the sustainable growth – and reduce the failure rate – of locally-owned business in deprived areas; and
- to attract appropriate inward investment and franchising into deprived areas, making use of local labour resources.

* LEGI Eligible Area



www.no-limits.org.uk

* LEGI Target Areas



Business Support Simplification



3 Business facing products:

- Get Set (Business Start Up)
- Finance for Growth (Business Expansion)
- Eureka (Technology and Innovation Support)

LEGI Marketing – ‘No Limits’



Target audience – 20% most deprived communities

150,000 population across 4 Boroughs

The aims:

- To change the enterprise culture
- To raise ambition and expectation
- To remove barriers

LEGI 3 year Programme outputs



- New Businesses Created 1272
- Businesses assisted 1600
- New Jobs Created 4000
- Self employment increase 10%
- Increase in VAT registrations 10%
- Business survival rates 80%



Eureka - Innovation & Technology Support for Pennine Lancashire



Supporting businesses and individuals to develop and grow
Through innovation and effective exploitation of technology

- ICT: software development, e-business, mobile, networks
- Product development: inventors and companies
- Process innovation

- Awareness raising / information services / networking
- Independent in depth one to one support



SSCA Holdings/Kiddisure Ltd – Product Development



- Inventor Steve Catterall
- New type of stair safety gate, expands into space available
- Intellectual property support to protect via UK Patent, registered design and trademark
- Pre production prototyping support
- Manufacturing licensing arrangements with two local companies.





Precision Polymer Engineering



- Specialist Manufacturer of Rubber Seals.
- Experienced exporters
- Automation of design process for high end specialist low pressure seals (o-rings)
- Bespoke software integration between ERP and CAD systems
- System went live in August 2008
- Has enabled more efficient processing of designs, BOMS and orders to more quickly serve wider customer base.



Lamps & Lighting



- Specialist distributors of leading edge energy efficient luminaires.
- Developing own innovative high end products aimed at export markets
- Trademark advice to ensure adequate protection
- Assistance with the commissioning of the related technical information and product images to ensure relevant detail and compliance for international trading.
- Aim for increased turnover and increased employment



Barnes Plastic Welding Equipment Ltd - e-business



- Plastic repair welding kits
- Increased competition, low barriers to entry. Traditional telesales and mail order
- first mover advantage with quality web site
- increased sales of kits and spares
- development of an export market
- £40k of new sales in first year and one additional job created





Example networks & events



- ICT/e-business breakfast seminars
- Ideas North West
- Annual Inventors Expo
- East Lancs ICT Cluster
- Patent Clinics



Example networks, events and linkages no limits

- Business Link
- Creative Lancashire
- Chamber of Commerce
Export Service
- Pennine Lancashire
Councils
- Enterprise Trusts
- Higher education
 - Lancaster University:
Infolab21 & Product
Development
 - UCLAN: Health Tech
Hub
- Ideas 21 Innovation Support
Network at the Intellectual
Property Office



Questions?